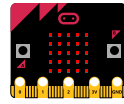


F U Z E B A S I C

BBC micro:bit "Setting Up"



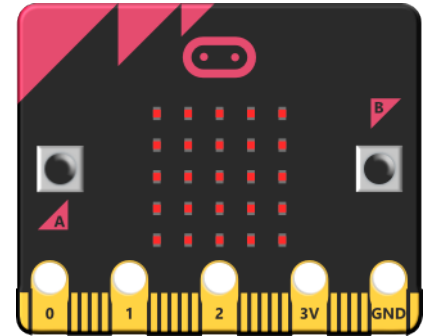
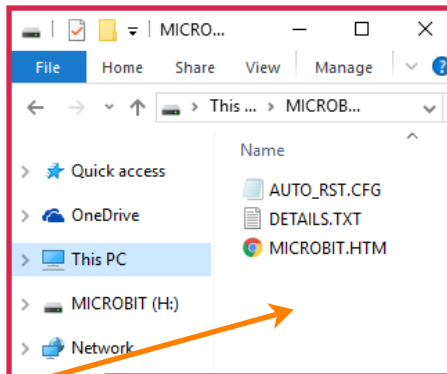
Worksheet:

1

First of all we need to configure the **BBC micro:bit** to work with FUZE BASIC.

Connect a **BBC micro:bit** to an available USB port on your Windows or Linux PC (inc Raspberry Pi).

A file explorer window will appear and you will see the files (displayed right) listed within. This is the contents of your **micro:bit**.

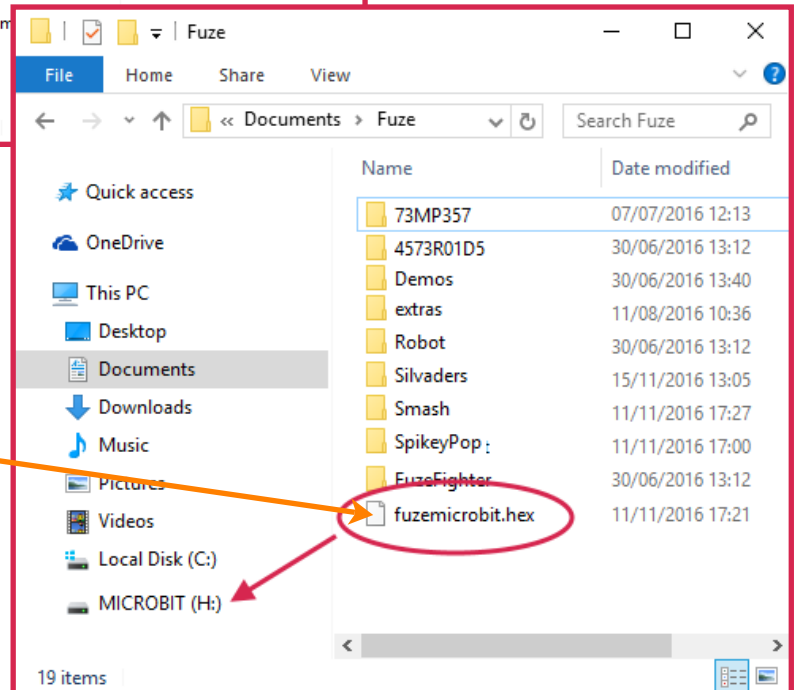


Open a new File Manager window and navigate to /Documents/Fuze (in Windows) or /home/pi/Desktop/fuze-basic (on a Raspberry Pi).

You will see a file named 'fuzemicrobit.hex' listed. Copy the file to the **micro:bit** folder in the other File Manager window.

This can be achieved by using 'drag & drop' or Control+C (to copy) and Control+V (to paste).

Once you have the file copying across the **micro:bit** status light will flash for a while then settle down.



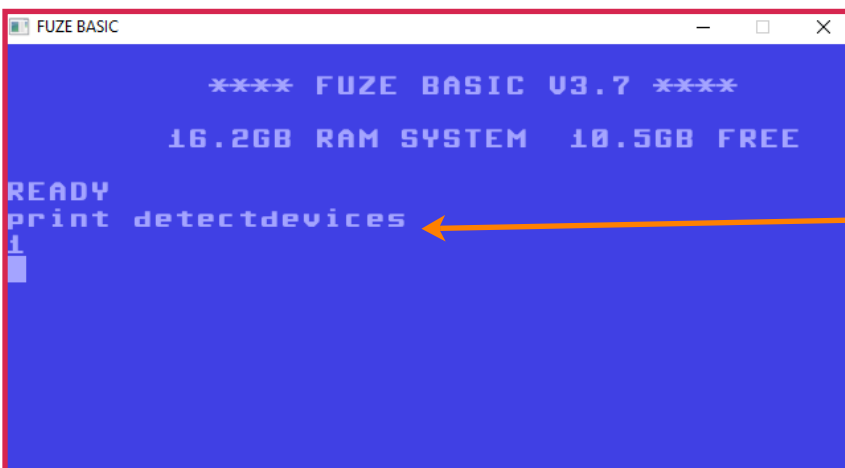
Load **FUZE BASIC** by selecting it from the START menu or if you one, by double clicking the icon.

In immediate mode (see left) type in;



PRINT DETECTDEVICES then press enter

The returned value should be 1. If it is zero try entering the command a couple of times. If it fails to connect please check the USB connection and that you are running FUZE BASIC version 3.7 or higher.



Now type **PRINT MBCOMPASSHEADING** then press enter The micro:bit will display the command 'DRAW A CIRCLE' on its mini LED matrix. Rotate the micro:bit round until the small dot completes the outline of a circle on the display. Once done the BBC micro:bit is 'calibrated' and ready to use with FUZE